

# Rolling in the Deep - Adele

TashaMS

♩ = 100

Measures 1-5 of the piano introduction. The key signature is B-flat major (two flats). The time signature is 4/4. The bass line consists of a steady eighth-note pattern: B-flat, D-flat, F, B-flat. The treble line has whole rests for the first two measures, followed by a melodic phrase starting on G4, moving up stepwise to D5, with some notes beamed together.

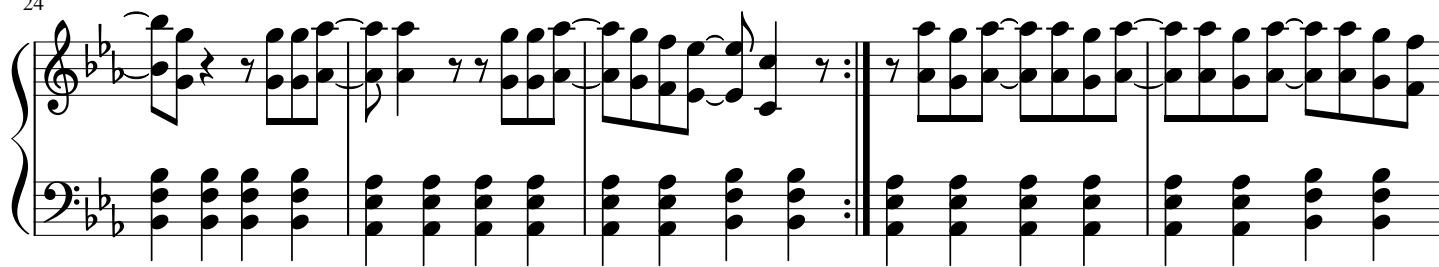
Measures 6-9. The bass line continues with the same eighth-note pattern. The treble line continues the melodic phrase from measure 5, with some notes beamed together and a half note on D5 in measure 9.

Measures 10-14. The bass line continues with the same eighth-note pattern. The treble line features a more complex melodic line with eighth and sixteenth notes, including a triplet of eighth notes in measure 10 and a quarter rest in measure 11.

Measures 15-19. The bass line continues with the same eighth-note pattern. The treble line continues the melodic phrase, featuring a triplet of eighth notes in measure 15 and a half note on D5 in measure 19.

Measures 20-24. The bass line continues with the same eighth-note pattern. The treble line continues the melodic phrase, featuring a triplet of eighth notes in measure 20 and a half note on D5 in measure 24.

24



29

